

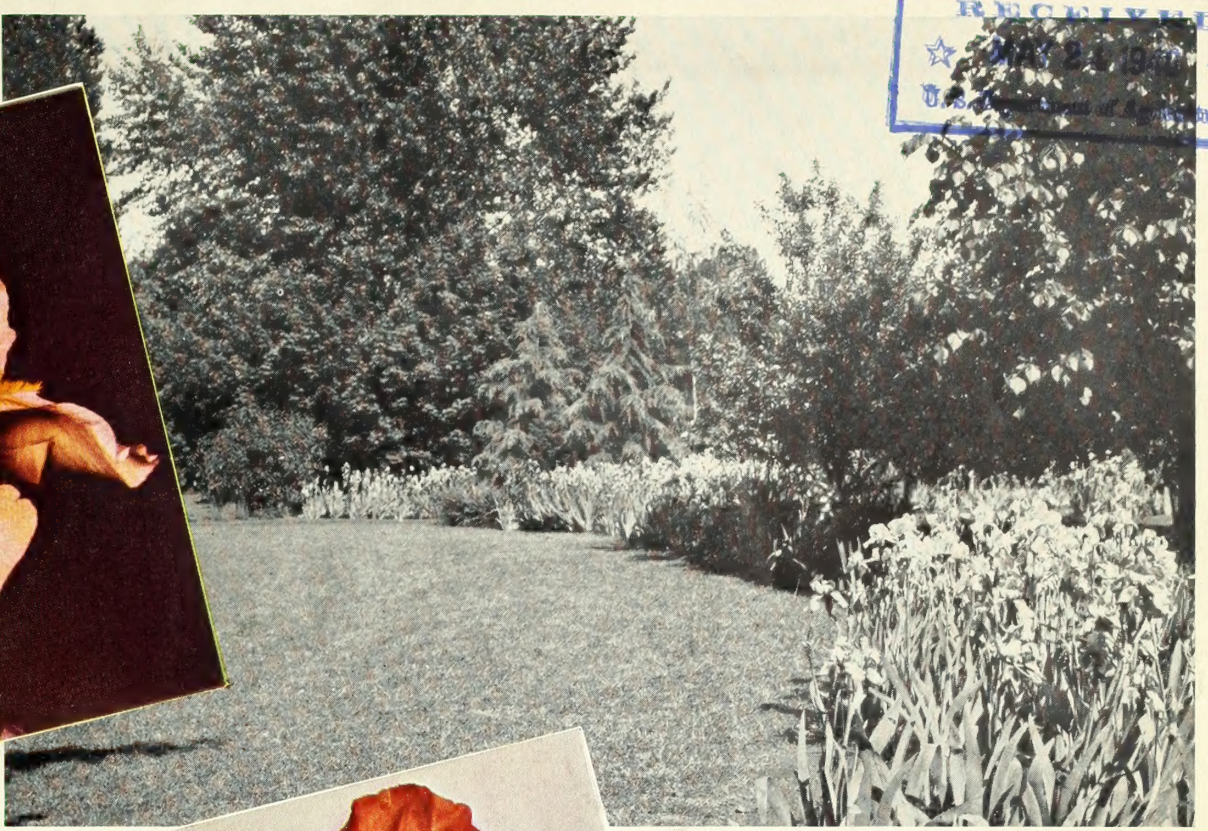
Historic, archived document

Do not assume content reflects current scientific knowledge, policies, or practices.

MISPLACED
RECEIVED
JUN 24 1940
U.S. MAIL



Old Parchment



Cooley's

SILVERTON
OREGON



Gardens

Bermuda Sand

1940



Louvois



GARDENS AT IRIS TIME

Crowning glory of the spring garden, following upon the heels of tulips and daffodils, with color in abundance and wide variety in form and size and height. Here, and on the cover, are scenes of our own display garden, but it can as well be yours, either on a smaller or an even larger scale.

1940 Introductions from **DR. R. E. KLEINSORGE**

PRINCE OF ORANGE

True orange in color, a clear self without markings of any kind, and it has never exhibited a single discordant fleck. A seedling of Far West and Naranja. Medium in size, very flaring in form, with flowers widely spaced along the jauntily branching stems; thirty inches tall. A clump of this in the originator's garden was a solid mass of golden orange and brought forth much favorable comment from visiting A. I. S. members. About a dozen rhizomes for sale this season. **Each \$10.00**

ARCTIC

A new white and gold iris of gigantic proportions in flower, stalk and foliage. Of perfect form, with ruffled but closed standards, and broad falls that are as smooth as white enamel. There is an area of bright yellow throughout the center of the flower that reminds one of Golden Treasure, but this iris is gleaming white instead of cream, and the contrast is most striking. Established plants will produce spikes four feet and over in height, with as many as six open flowers at a time. **Each \$10.00**



DR. R. E. KLEINSORGE

BIRCHBARK

Here is one of the finest white irises we have ever grown or ever seen, one of the parents of "Arctic" described above, and it should have been introduced two seasons ago. In the meantime the stock has increased so that we can offer it at a fraction of its real value. A very large flower, the falls broadly spreading and with a pronounced rounded shape. Solid clean white, with a very cool inner glow. Branching and all habits of growth are just about perfect. Height three feet. **Each \$2.00; three for \$5.00**

This is a *Sale* of Finest IRIS Novelties

OPPORTUNITY!

You well know the old, old story . . . opportunity . . . so seldom passing our own way, and so elusive, with winged heels that speed him on his way, once he has eluded our grasp in his flight.

But legend has adorned him with a prominent and abundant forelock . . . seized within one's grasp whilst the proper moment is at hand, he can be captured and all that he represents can be yours.

And this is an IRIS opportunity!

This catalog, while not so great in bulk as its predecessors, is full to the brim with the cream of modern iris, and collection offers that will astound you. We are not quitting business, but we have acquired such a large stock of plants of the newer irises that some unusual and drastic action is necessary to distribute them. It is a plain statement of fact that the available supply of rhizomes of recent novelties has multiplied beyond the demand of those gardeners who appreciate and who can afford to buy expensive new introductions.

All of the prices in this catalog are low—vastly under those of a year ago—but your attention is especially directed to the offers on pages 11, 12, 13 and 14. These things we are growing in large numbers, and on these particular items we make special concessions that make it possible for you to purchase a modern iris collection at a fraction of its real worth.

Large though our stock may be, as this catalog goes into the mail, it is not inexhaustible, and to those of you who desire a full selection of your favorite varieties, may we suggest that you grasp opportunity by the forelock!

AN UNOFFICIAL IRIS SYMPOSIUM CONDUCTED BY KENNETH D. SMITH

(Reprinted from the Bulletin of the American Iris Society, April, 1940)

What are the best iris in commerce today? A list of 50 or 100 varieties should be of interest to all members of the Society, but what judge could make out such a list without personal prejudice and bias? Therefore, a symposium is the logical solution, and if it is made up from lists submitted by competent judges who have traveled outside of their own region and thus have had the opportunity of seeing the newer introductions, it should be truly a representative list of the 50 best iris in commerce in that particular year. To be of real value, such a symposium should show many of the newer varieties; otherwise, it would be a list of "old favorites," which would be of value to no one.

With that idea in mind I decided to conduct an "unofficial" symposium, and I therefore wrote 50 accredited judges of the Society who I knew, or had been told, had visited outside of their own regions, and I asked for a list of what they considered the 50 best bearded iris in commerce which they had seen, preferably in various locations, and regardless of year of introduction or of color classification. This list was to be divided into three groups: Group 1, the best ten; Group 2, the next 20; and Group 3, the final 20. For tabulation, I awarded Group 1 iris three points; Group 2, two points; and Group 3, one point.

A certain number of judges were taken from each region of the Society in order fairly to represent the country as a whole. Thirty-three cooperated and sent in lists, and, believing it of interest, I am listing those judges whose consensus of opinion the symposium represents. They are grouped according to the regions established by the Society.

Region 1: Henry Butterworth, Dr. R. I. Graves, W. M. Kellogg, Mrs. Herman E. Lewis, W. J. McKee, Mrs. Thomas Nesmith and Mrs. W. E. Tobie; *Region 2:* F. W. Cassebeer, Col. J. C. Nicholls, K. D. Smith, Ilse C. Smith, Robert Wayman; *Region 3:* S. H. Baker, 3rd, John Dolman; *Region 4:* J. P. Fishburn, Charles E. F. Gersdorff; *Region 5:* Mrs. Louise Blake; *Region 6:* E. G. Lapham, Mrs. Silas B. Waters, Miss Mary Williamson; *Region 7:* Frances Douglas, Geddes Douglas, Dr. Henry Lee Grant, J. E. Wills; *Region 8:* Robert Schreiner; *Region 9:* Dr. J. Franklin Cook, David F. Hall, Mrs. Charles G. Whiting; *Region 13:* R. M. Cooley, Alex Maxwell; *Region 14:* Prof. S. B. Mitchell, C. S. Milliken, Carl Salbach.

The following is the result of the tabulation:

VARIETIES IN ORDER OF POINTS SCORED	Number of judges voting for each iris	Votes in Group 1 (Each vote 3 pts.)	Votes in Group 2 (Each vote 2 pts.)	Votes in Group 3 (Each vote 1 pt.)	Total Points
1. Wabash (Williamson '36).....	29	17	11	1	74
2. City of Lincoln (H. Sass '37).....	25	11	12	2	59
3. China Maid (Milliken '36).....	25	10	11	4	56
4. Golden Treasure (Schreiner '36)...	23	9	6	8	47
5. Amigo (Williamson '34).....	23	4	14	5	45
6. Prairie Sunset (H. Sass '39).....	15	14	1	..	44
7. Great Lakes (Cousins '38).....	18	8	9	1	43
8. Junaluska (Kirkland '34).....	21	7	8	6	43
9. The Red Douglas (J. Sass '37)....	21	7	8	6	43
10. Christabel (Lapham '36).....	18	7	8	3	40
11. Fair Elaine (Mitchell '38).....	15	9	6	..	39
12. Radiant (Salbach '36).....	20	4	10	6	38
13. Angelus (Egelberg '37).....	19	4	9	6	36
14. Mount Washington (Essig '37)....	14	9	4	1	36
15. Shining Waters (Essig '33).....	19	4	8	7	35
16. Yellow Jewel (K. Smith '39).....	13	9	4	..	35
17. Cheerio (Ayres '34).....	19	1	13	5	34
18. Gloriele (Gage '33).....	18	5	6	7	34
19. Midwest Gem (H. Sass '37).....	16	4	10	2	34
20. Exclusive (Grant '37).....	20	2	9	9	33
21. Sable (Cook '38).....	14	5	8	1	32
22. California Gold (Mitchell '33)....	18	3	8	7	32
23. Lighthouse (Salbach '36).....	17	4	7	6	32
24. Matterhorn (J. Sass '38).....	13	6	6	1	31
25. Naranja (Mitchell '35).....	20	1	9	10	31
26. Copper Lustre (Kirkland '34).....	15	5	4	6	29
27. Los Angeles (Mohr-Mit. '27).....	15	5	4	6	29
28. E. B. Williamson (Cook '37).....	13	4	7	3	28
29. Ormohr (Kleinsorge '37).....	13	5	5	3	28
30. Rosy Wings (Gage '35).....	16	2	8	6	28
31. Copper Crystal (Wash. '38).....	12	5	5	2	27
32. Sierra Blue (Essig '32).....	16	2	7	7	27
33. Golden Majesty ('38).....	11	4	6	1	25
34. Jasmania (Ayres).....	14	3	5	6	25
35. Missouri (Grinter '33).....	2	4	9	23	25
36. Morocco Rose (Loomis '37).....	12	..	11	1	23
37. Stella Polaris (K. Smith '39).....	8	7	1	..	23
38. Easter Morn (Essig '31).....	10	3	6	1	22
39. Moonglo (Williamson '35).....	11	1	8	2	21
40. Snowking (H. Sass '35).....	12	1	7	4	21
41. Monadnock (Salbach '37).....	10	2	6	2	20
42. White Goddess (Nesmith '36)....	12	1	6	5	20
43. Garden Magic (Grinter '36).....	10	1	7	2	19
44. Matula (H. Sass '39).....	10	3	3	4	19
45. Maya (Washington '35).....	11	2	4	5	19
46. Frank Adams (Lapham '37).....	12	1	4	7	18
47. Louvois (Cayeux '36).....	10	1	6	3	18
48. Cortez (Nesmith '34).....	10	..	7	3	17
49. Marquita (Cayeux '31).....	13	1	2	10	17
50. Shah Jehan (Neel '32).....	14	..	3	11	17

It is interesting to note that 30 of the 50 iris are introductions of the past four years and that only one of the older iris (Los Angeles, 1927) made the list. Again I want to stress the point that if those 33 judges had not had extensive collections in their own gardens, besides having traveled and seen the newer introductions, this symposium would have been entirely different; most likely it would have been merely a list of the older, still popular varieties, but probably superseded by the newer introductions.

Several very competent judges were of the opinion that I should have asked for a list of 100 varieties, as they believed a list of 50 did not have breadth enough to include many worthwhile varieties. I feel that if all the judges were asked to send in a list of 100, too many old-fashioned varieties would be included. A symposium should not be padded, and my suggestion would be if an official symposium were held, and it was decided to list 100 iris, that each judge would be allowed to vote for only 50, but in the final tabulation, the highest 100 iris would count. From the 33 lists submitted for my symposium, some 325 different varieties were mentioned. By including the iris that received five or more votes with ten or more points, there are an additional 46. This total added to the original 50 would give a well-balanced, representative collection of 96. These Honorable Mention iris are as follows:

16 Points—Blue Spire (7), Charlotte Millet (8), Ozone (11), Persia (11), Royal Coach (9), San Francisco (9), Song of Gold (9), Valor (8).
15 Points—Cathedral Dome (8), Elsa Sass (7), Gudrun (9), May Day (7), Miss California (8), Ruth Pollock (6).
14 Points—Aubanel (8), Brunhilde (10), Claribel (6), Frieda Mohr (8), Happy Days (8), Jean Cayeux (13), Red Gleam (6), Snoqualmie (8).
13 Points—Directeur Pinelle (8), Glen Ellen (6), Golden Bear (8), Indian Hills (6), Mme. Maurice Lassailly (7), Red Bonnet (7), The Bishop (8).
12 Points—Anitra (7), At Dawning (8), Diana (6), French Maid (8), Golden Hind (9), Rameses (12), Seduction (8), Tiffany (6).
11 Points—Depute Nomblot (7), Grace Mohr (7), Mount Cloud (7), Sandia (8), Winneshiek (7).
10 Points—Chosen (5), Gallant Leader (5), Pale Moonlight (7), Treasure Island (6).

Amoenas and Variiegatas are two classifications of iris that were never considered popular, yet Wabash places first, almost lapping the field, and City of Lincoln, second. Midwestern iris dominate the first ten; yet the California iris come back strong in the second group.

One California judge, who did not send in a list, wrote, "Ratings on Eastern and Mid-West productions are of no benefit to us because almost none of them grow well in this climate. Your symposium if, kept to sections of the country, might indicate the better iris for each locality at the moment; otherwise it would have no value." Yet the three California judges who sent in lists evidently did not feel the same way, for of the seven Midwestern iris listed in the first ten, all three judges voted for two, and two others voted for three more; so only two were not mentioned.

One judge remarked that the list would most likely contain too many of the recent novelties; another judge wrote that his list was incomplete because the best iris he had seen were unintroducted seedlings not distributed. It is well to remember in conducting this symposium that I wanted to seek the 50 best iris in commerce, regardless of year of introduction, and it was my intention neither to list only the popular priced varieties nor those not yet available.

From correspondence I have seen, it is surprising how many members rely on information published in the *Bulletin* for their purchases. This is particularly true of our foreign members. Such a symposium, to be useful to them, must include the newer outstanding introductions. Individual lists or comments may be biased, but a symposium such as I have undertaken reflects collective opinions and should be of special benefit in guiding beginners to know and to grow the better iris.

Some favorable comments from the letters received are as follows:
 "I trust that the list will help you in starting a feature of the *Bulletin* which should be very instructive and valuable."

"Hurrah to you for doing this work... Such discussions of varieties would give some punch to the *Bulletin*... even if the list won't be perfect, it would be an interesting thing. The more lively the discussion and hullabaloo, the more attention we can draw to our favorite flower."

"I agree with you that the scoring of iris seems to be of little value, but I do think it is interesting to group a number of them."

"I would really like to see the first article developed into a series: For instance, after the tabulation of the 50 most popular iris, there might be a separate symposium for each main color group. For instance, there might be an article on red iris..."

"Such a tabulation ought to be of value to everyone, especially to those who are just beginning to know and grow the better iris."

Another judge wrote as follows:
 "A symposium would be eminently unfair to an iris unless it gets a thorough distribution. The result would be that the newer varieties which are usually better than the old would be down at the bottom of the list or wouldn't even make the symposium because their scarcity would prevent the majority of the judges from seeing them."

In an ordinary symposium that judge would be correct, but if a rule were made that in order for a judge to vote for the symposium, he must travel outside of his own region, that would remove one of the above obstacles. Also, by dividing the symposium into three classes, with a different point score for each, the newer outstanding novelties would be listed by many judges among the first ten, and so in the tabulation should rate near the top. Both of these points are proved by the symposium I have just conducted.

This unofficial symposium is an experiment on my part, and I hope the members have found it of sufficient interest to request the Society to hold an official one each year.

THE Charm OF AN IRIS GARDEN

lies in the fact that it is never finished! Always there is something new, something different, something better. And this is only natural, for progress and improvement go hand in hand. Happily for you who choose the iris as your hobby flower, the hybridizers never fail to come up each year with an array of interesting and beautiful new creations, awaiting the chance to grace your garden.

TERMS, TIME OF SHIPMENT, ETC.

SHIPMENTS will be made beginning about June 20th. If you wish your order sent later, or on any specific date, we shall carry out your instructions.

TRANSPORTATION is by prepaid express or parcel post, whichever we deem most expedient. Be sure and state your express office, if different from postal address. We pack in dry excelsior in well ventilated cartons and guarantee safe delivery to point of address.

TERMS are cash with order, either check, draft or money order. We do not advise the enclosure of currency with your order.

WE GUARANTEE all plants to be true to name, first size, free from disease and pests, and to reach you in a live and healthy condition. Should any prove otherwise, they should be promptly returned to us and we will make immediate adjustment.

We have never had an iris borer!

3 of one variety for the price of 2, if not over \$1.00 each

ALINE Each 40c

A truly lovely clean pure blue, large in size, on tall stems. Possesses an unusual enamel-like lustre.

ALLUMEUSE Each \$5.00

A gorgeously colored new thing from the originator of Gloriole and Rosy Wings, Mr. Gage. A greatly improved Sir Michael, with mahogany falls and bright violet standards, set off by a fiery orange beard. Height 45 inches.

AMENTI Each 40c

Grayish vinaceous standards, light mauve falls, pale yellow beard. An odd blend somewhat like Pres. Pilkington. Large and a fine grower.

AMIGO Each \$1.00

A very richly colored iris with light bluish violet standards and deep purple falls margined white. The contrast is very striking and resembles the most velvety pansies. See page 12.

AMITOLA Each 60c

A blend of pink and rose, larger and more delicately colored than Rameses. The central portion is overlaid with gold and russet.

ANGELUS Each \$3.00

In color a bright light pink, with slight lavender iridescence just below the lemon beard. Throughout the center there is a delicate infusion of lemon yellow. Large, shape of Depute Nomblot, 3 feet tall, and very late.

ANITRA Each \$1.00

A silvery sky blue, pure in color, of great size and beautiful form. Possibly the best blue origination from the Sass Brothers.

APRICOT Each \$4.00

This is a seedling of Far West, a solidly colored golden apricot self. Of medium size, with a slight fluting and ruffling in both standards and falls. Height about 3 feet. Shown in natural color on page 5.

AT DAWNING Each 75c

Appropriately named flower of huge size, arbutus pink and brilliant rose, light yellow at the throat, with pearly suffusion in the standards.

AUBANEL Each \$4.00

New pink blend from France, shrimp pink in general tone, with yellow center. An improvement on the Frivolite type. Very limited stock.

AUTUMN FROST Each 40c

The very finest fall blooming white, clean in color and very rapid of increase. It has golden markings in the center of each fall.

AVONDALE Each 50c

Subdued shades of violet and copper, with a very vivid orange beard and inner glow. An iris which has attained great popularity for its unique color and general excellence.

AZTEC COPPER Each \$15.00

Kleinsorge introduction of 1939. A rare and subtle blend of smokey violets and delicate coppers, blended and washed together in lovely harmony to baffle description. Positively huge, with broad hafts and leathery substance, wonderfully branched. 36 to 40 in. See it on page 9.

BALLET GIRL Each 50c

Pure blush pink, soft and daintily colored, with large rounded flaring falls. The lightest shade of pink of any iris in our list, with nicely branched stalks 3 ft. in height.



APRICOT



STAINED GLASS



BUCKSKIN



MODISTE

- BALMUNG** Each \$12.00
Here is a new one in the latest series of plicatas from Hans Sass. It has heavy brown markings on the solid yellow ground of both standards and falls. Flowers are large, well rounded, and on tall stems. Few plants.
- BEOWULF** Each 75c
True maroon red, with a brownish undertone, of exceptional velvety richness. A seedling of Grace Sturtevant, large, early blooming, and well branched.
- BERMUDA SAND** Each \$7.50
A glorified and gigantic Jean Cayeux, with both standards and falls heavily ruffled. Deeper in color than Jean Cayeux, a light coffee tan with a glint of gold. This iris was introduced by us last year from David Hall, of Chicago, after it had acquired glowing advance publicity. Shown on the cover in natural color.
- BLUE DANUBE** Each \$1.00
A rich deep blue self, with blue tipped beard. Very large in size, with widely flaring falls. An English introduction.
- BLITHESOME** Each 50c
Creamy white with heavy golden center; a tall and stately flower of marble-like appearance. From the originator of the well-known Dauntless.
- BONANZA** Each \$7.50
Most yellow of all the new type plicatas, with a very rich ground color and thick veining of brown on the standards, less on the falls. Very limited stock.
- BRUNHILDE** Each 75c
Very dark uniform violet-blue self, including an unusual blue beard. A most regal iris of great color intensity, with splendid stems and widely flaring blossoms.
- BRONZINO** Each \$3.00
Standards frosty golden bronze, falls bright coppery bronze. This is a very large flower and vigorous grower, from Carl Salbach in California.
- BUCKSKIN** Each \$5.00
No flower was ever more appropriately named. The stalks rise to a height of four feet, bearing close to a dozen great blooms with large closed standards and wide flaring falls. This is far and away ahead of other tan iris now on the market. It is a Kleinsorge seedling introduced by us last season. See page 5.
- BURNING BRONZE** Each 40c
A dark but blazing metallic red, a flower of great size, and one which has carved a favorable name for itself these past several seasons. It differs from most other reds in its bronzy finish.
- CAFE AU LAIT** Each \$4.00
Soft creamy tan blend, with orange and gold shading. A seedling from the late Sam Graham, of Rome, Georgia. Tall and well branched, medium in size.
- CALCUTTA** Each \$2.00
Tall and imposing flower in delicate cocoa-brown tones, entirely overlaid with a bluish veil. Of bold growing habit, widely branched, carrying more than a dozen blooms per stalk. See page 9.
- CALIFORNIA GOLD** Each 25c
By all odds the best value in a yellow iris at anywhere near the price. It is an easy grower and free bloomer, deep glittering yellow of very large size, and surpasses everything in its color except the recent novelties. We have a huge stock, hence the low price.
- CASQUE D'OR** Each \$4.00
Deep old gold standards, considerably ruffled, with greenish mid-ribs. Falls are richest blackish maroon. A brighter and more striking edition of El Tovar.
- CHARLOTTE MILLET** Each \$15.00
A new thing from France and one which created quite a stir last season. The color is bright reddish lilac in a shade that is both novel and beautiful. Very few plants.
- CHARM** Each \$1.50
Quite a different tone of strawberry red, a bit lighter than most other reds, and with a slight smokey wash that seems to restrain the color. It is large in size, blooming somewhat late.
- CHEERIO** Each 40c
In the red class this has no peer at the same price. It is tall, vigorous, dependable, and a striking red iris in the garden. It holds the same position in this color that California Gold does amongst the yellows.
- CHINA MAID** Each \$3.00
Here again we are confronted with the task of describing an indescribable iris! This is in shades of pink, golden copper, and lilac, smoothly blended together. Large size and fine form add to its high quality.
- CHOSEN** Each \$8.00
The great new yellow from Southern California. Of tremendous size, solidly colored metallic yellow, even the beard being the same uniform shade.
- CHRISTABEL** Each \$2.50
Red . . . and it will not disappoint the most exacting critic. For sheer brilliance we rank it second only to the new Red Gleam from Mr. Lapham, the same originator. Glorious as a garden clump, almost a self, of large size, over 3 feet tall.
- CITY OF LINCOLN** Each \$5.00
Brightest, largest, and surely the finest of all variegatas. Clear golden yellow standards, broad fiery red falls, startling in their contrast. Of bold habit, one of the triumphs from Hans Sass.
- COPPER LUSTRE** Each 80c
Entirely different from all others, its great popularity has resulted not only from the odd and beautiful copper tone of its flowers, but also from the fact that it performs well in all sections of the country. It positively glows in its bright copper, gold, and pinkish tan blendings. Dykes Medal, 1938. Now sold at a price that will permit everyone to own it. Shown on page 16.
- COPPER PIECE** Each \$2.50
A very bright reddish toned iris with distinct copper shadings below the beards. Of medium size, it is a unique thing as to color.
- CORALIE** Each 35c
With pinkish standards and raspberry red falls, this iris when well grown is strikingly pink in garden effect. It won the Dykes Medal in 1933 and has always been very popular.
- CORINTHE** Each \$2.00
A huge purple self, bishop's violet by Ridgeway, with an almost white beard, blooming at the very last of the season.
- CORONET** Each \$6.00
Soft rose beige with a golden tone, a new color and one of the outstanding recent introductions from David Hall, of Chicago. It is tall, widely branched, with fine flowers of large size.
- CREOLE BELLE** Each 50c
Very dark purple with odd brownish stain about the hafts. Rather a sombre flower, but rich and individual in effect.
- CRYSTAL BEAUTY** Each 25c
Tall clean white from the Sass Brothers, hardier than Purissima, giving somewhat the same garden effect. 40 inches.

DERRILL HART Each \$8.00

A very new thing which might be described as a brighter but deeper colored Depute Nomblot. Standards are rose shot with bronze, the falls deep velvety wine. Tall and of heavy growth.

DESERET Each 40c

As exciting and gay as a gypsy carnival. Standards are very deep yellow, falls the same heavily brushed chestnut red. Excellent as a matured clump, where it gives an orange-red garden effect.

DESTINY Each \$1.00

A great heavy flower of deepest blackish bronze purple, with rich golden beard. From New Zealand, and it ranks as one of the truly fine novelties not recently produced in this country—there are so few of them.

DIRECTEUR PINELLE Each 50c

The color is richest maroon purple, with bronzy undertone, and few irises are of greater size. Newly opened blossoms are almost black. Of splendid form and perfect branching habit.

DORE Each 40c

A yellow and cream bicolor, the standards of light yellow and the falls creamy white. It is the only color combination of this kind in our list.

E. B. WILLIAMSON Each \$5.00

Glowing coppery red blend, a deeper and redder effect than Rosy Wings. Not to be confused with either the reds or the coppers, it stands in a special niche all its own. Large flowers of silky texture, fragrant, on 3-foot stems. Awarded the Gold Medal as finest iris in the Rome, Italy, trials.

ELKHART Each \$1.00

Deep chestnut red, with a brownish cast. A seedling of Ethel Peckham crossed with King Tut. The flowers are rounded in form, profusely borne, and lit up with a vivid orange beard.

ELLA WINCHESTER Each 80c

Rich mahogany red self with very long velvety falls. Absence of haft markings gives it great depth of color.

EL TOVAR Each 75c

A gorgeous variegata blend, in rich brown yellow and blackish maroon, with a yellow glow at the heart. An effect of molasses and honey, with a drop of gold at center.

EROS Each 25c

Very tall salmon colored self, possibly the nearest to this color ideal that has ever been offered. The throat is lit with gold, giving it a special brilliance.

ELSA SASS Each \$20.00

An entirely new shade of yellow, clear sulphur, with a greenish cast in its depths and a near white blaze near the haft. The blossoms are of large size, rounded in form, and slightly frilled at the edges. One of the most startling things ever released by the Sass Brothers. Few plants.

ETHEL PECKHAM Each 35c

Large, perfectly formed flowers of a brilliant reddish tone. At the time of its introduction it was far in advance of all other reds. It throws up a few occasional stalks throughout the summer and fall.

ETHIOP QUEEN Each \$7.50

We hear a lot about "black" irises; this is surely a near approach, with standards of deep blackish violet, and falls practically coal black. Substance is extra heavy and velvety, with a glistening sheen.

EVELYN PULLAR Each \$5.00

A real winter bloomer, but actually a tall bearded iris in two tones of pale blue with bright yellow beard. Protected from snow and freezing weather by a box-like frame, it will produce huge stalks of lovely flowers throughout mid-winter.

FAIR ELAINE Each \$15.00

Standards are almost cream, the falls an emphatic yellow set

off with a most fiery orange beard. This and the new Elsa Sass are truly distinct innovations in the field of yellow iris, now becoming so crowded.

FAR WEST Each \$1.00

One of the loveliest of all blends, a rare medley of salmon and golden sand, of coral and henna, with a soft glow at the heart. It is of bold and sturdy growing habit, the big blooms well spaced on fine stalks reaching 40 inches in height. A great bargain at this price. Shown on page 15.

FIESTA Each \$2.00

Sparkling copper standards, apricot orange falls, a very gay affair! The large oval blooms are well held on 3-foot stems. From California and a bit tender in severe climates.

FRANK ADAMS Each \$5.00

A tall and very well proportioned large new iris with rosy tan standards and rosy red falls. Produced by E. G. Lapham, of Elkhart, Indiana. Flowers, stalk and foliage are of unusually large size.

GARDEN MAGIC Each \$5.00

A magnificent deep, glowing, velvety red. For the past two or three years this has been generally recognized as the finest red in existence. The new Red Gleam is of a lighter tone, not quite so large, and a nearer approach to true red. Garden Magic is quite late, tall, a big blossom, and wonderfully rich without haft markings.

GENEVIEVE SEROUGE Each 30c

Of soft pastel shades, tan in the standards and with a faint blue flush, the falls misty blue with edge of honey yellow. Vigorous grower, reaching almost four feet.

GLORIOLE Each 50c

An iris of huge size with pale blue petals overlaid with frosty crystal-like particles. Wonderfully well formed and a noble flower. Height 40 inches. Color sometimes called "ice blue." See page 14.

GLOWPORT Each \$2.00

Solidly colored glowing wine red, devoid of haft markings, with bronze yellow beard. Introduced in 1939 on its merit as an exceptional red iris, it has now proven to be a most reliable fall bloomer in various parts of the country. Tall and well branched.

GOLDEN BEAR Each \$1.00

Deeply colored uniform yellow of medium size, prolific in flowering habit. From the originator of California Gold and Happy Days.

GOLDEN BOW Each 35c

An intermediate, perfectly clear rich yellow, a rapid grower. This is by far the finest yellow in its class.

GOLDEN HELMET Each 50c

A huge King Tut, with very ruffled standards and oxblood red falls, waved at the tips. Velvety texture, a rich bit of color.

GOLDEN HIND Each 90c

No yellow iris in commerce contains the rich deep buttercup tone of this English origination. A vivid red-orange beard gives it extra brightness.

GOLDEN LIGHT Each 25c

A highly ruffled and very free flowering cinnamon-orange-buff affair. It completely displaces the older Euphony, and can be had at a remarkably low price. Fine for cutting and for garden effect. See page 20.

GOLDEN SLIPPERS Each \$1.00

Beautiful flower, fine shape, prolific bloomer. A clear daffodil yellow with myriads of blossoms of medium size and height.

GOLDEN TREASURE Each \$2.00

Solid deep cream, but with an outpouring of rich golden orange all about the central portion of the flower. Tall, perfectly branched, very floriferous, it will stand out in a planting of hundreds of varieties. Shown on page 12.

GOOD CHEER Each \$1.50

Clear orange yellow standards, falls the same but heavily overlaid with red-brown. You will find this quite different from other variegatas, a standout as a garden highlight

GRACE MOHR Each \$3.50

A seedling of William Mohr, with widely flaring falls and tall stems reaching to 40 inches. The color is not much different than that of Ormohr, but the flower is of different shape and a bit earlier.

GREAT LAKES Each \$4.00

A new clear blue self, produced in Canada by Lyman Cousins, of London, Ontario. A broadly spreading regal type of flower, with handsome foliage and finely branched 4-foot stalks. Color is about the same shade as Shining Waters. H. M. A. I. S. 1939.

GOLDEN MAJESTY Each \$12.50

Salbach's introduction as the greatest yellow of all time. It is everything claimed for it in California, but we shall have to reserve opinion on it here until tested another season. We can supply only a few rhizomes.

GUDRUN Each 35c

Heavily textured enormous white, with petals like those of a magnolia. A warm or creamy white, with brilliant orange beard and a slight gold dust sprinkling over the entire bloom. A constant winner at the shows.

HAPPY DAYS Each 25c

A giant of a flower, smooth light yellow in color. Inclined to lush growth and in severe climates should be afforded some protection, but it amply rewards this extra care. For years it has commanded a rather high price, but we can now supply it at a figure any gardener can afford.

IMPERIAL BLUSH Each 25c

Tall free flowering blush pink, reaching 40 inches in height. This does not carry any of the yellow influence of most pinks, but a lemon beard adds an interesting touch.

ITASCA Each 75c

Of the darkest, yet most vivid, deep amethyst. A rounded bloom of silk-like texture and finish, with beard of soft brown underlaid blue. One of the loveliest things we have ever introduced, and it has never been equalled. Inclined to flower too freely—cut out some of the spikes when they are first forming and finer ones will result. See page 19.

JASMANIA Each \$1.50

The color is about that of a ripe banana! Near the center is a faint suggestion of light brown, and a still fainter flush of pale blue in the center of the falls. While not a clear yellow, it is nearly so, and is actually the more beautiful for its blended additions.

JEAN CAYEUX Each 35c

A smooth, soft, light buff, described by some as "coffee colored." The stems are tall and well balanced in branching with a long season of bloom. A very distinct iris.

JEB STUART Each 50c

Deep blackish maroon brown, with rich orange beard. A great improvement on Grace Sturtevant, being larger, taller, and of much better form.

JERRY Each 25c

A bright ruby red iris of medium size and splendid growing habits. It increases fast, and is a heavy bloomer.

JOYCETTE Each 35c

An extra late deep blackish red with an undertone of rich mulberry. The stalks are tall and sturdy, the blooms practically self colored.

JELLOWAY Each \$2.00

This yellow is as deep in tone as Golden Hind. It is preferred by some because of its larger size and greater height, but it is not so perfect in form. Few plants.

JUNALUSKA Each \$1.00

One of the finest novelties in commerce, a unique blend of red, copper, rose and gold. The effect is copper-red. An early bloomer, very tall and perfectly branched. A runner-up for the Dykes medal in 1938.

KALINGA Each 50c

Huge cream self, outstanding not only as an exhibition spike, but as a garden specimen as well. The broad spreading ivory-textured blooms generally come out in groups of three or four simultaneously, and each stalk will carry from twelve to fifteen blossoms.

KHORASAN Each 80c

New blended variegata, with peculiar auburn tinted falls flushed with violet. The standards are dull old gold. Petals are waved at the edges, very heavy in texture.

LADY PARAMOUNT Each 40c

A really magnificent flower in clear primrose yellow, with firm silken texture. It is one of the most stupendous in size of flower and foliage in our collection.

LIGHTHOUSE Each \$1.50

A very bright rose blend, of bold growing habit with enormous blossoms. In effect an old rose self with a most brilliant center of yellow and fiery gold. We regard it as one of the best novelties of the past three seasons. See page 13.

LOUVOIS Each \$5.00

Brown, deep rich and velvety, like the lustrous fur of an animal. This new French sort has been one of the surprises of the past two years. Standards are a decided brown tone, the falls exceedingly dark brown, edged to match the standards. Shown on the cover.



MOHRSON



AZTEC COPPER



CALCUTTA



TREASURE
ISLAND

All 10 for \$2⁰⁰

☆ *Every plant labeled, each one a perfect and fully matured blooming size specimen. Postpaid to your door!*

California Gold

Crystal Beauty

Eros

Golden Light

Imperial Blush

Happy Days

Mary Geddes

Sierra Blue

Ethel Peckham

Jean Cayeux

Deep golden yellows, shades of lilac and salmon pink, soft tan and brilliant cinnamon, blue, red, and sparkling white.

This is the finest collection of iris we have ever offered at such a low price. Late in the season we reserve the right to substitute up to two or three sorts from the list on page 14, in case of shortage of stock, but we cannot entertain any changes in the offer by the purchaser.

SIERRA
BLUE



AMIGO



LIGHTHOUSE



GOLDEN TREASURE



MOROCCO ROSE



RADIANT

Opportunity in startling,



SALE A Any **10** for **\$5**
Offer Any **20** for **\$10**

(only 1 of a kind varieties listed directly below)

- AMIGO
- AMITOLA
- ANITRA
- AT DAWNING
- BEOWULF
- CALCUTTA
- COPPER LUSTRE
- DESTINY
- ELKHART
- FAR WEST
- GOLDEN HIND
- ITASCA
- TREASURE ISLAND
- KALINGA
- MOHRSON
- LIGHTHOUSE
- MARCO POLO
- RED CROSS
- NARAIN
- SOLITUDE
- ROSY WINGS
- REBELLION
- SEADEEP
- SANDALWOOD
- SNOWKING
- NARANJA
- SIR LAUNCELOT
- MARQUITA

WHERE is there an iris lover when these things right before your garden? Rarity and high price to have and to own and to enjoy. The very aristocracy of Irisdom will be on the list. If you want the best iris ever bound to come as the days pass after June 20th.

SALE B Any **10** for **\$5**
Offer Any **20** for **\$10**
(only 1 of a kind varieties listed directly below)



MI WEST



SIEGFRIED



MISS CALIFORNIA



THE RED DOUGLAS

almost unbelievable reality

...er who, all of his or her iris growing career, has not yearned for the day to come
...be feverishly unpacked and carefully planted out in the soil of their very own
...price may have kept them at forbidding distance, but at last here they are, yours
..., in group offers which permit wide selection.

...will be found here. Only last season a hundred dollars would scarcely have dented
...s collection that money can buy, do not delay . . . shortages of some sorts are
... Place your order as soon as possible—we will ship it on the date you desire

for **\$20**
(of a kind)
led to the right

APRICOT
CHINA MAID
MISS CALIFORNIA
MIDWEST GEM
MODISTE

MOROCCO ROSE
GOLDEN TREASURE
MRS. WILLARD JACQUES
RADIANT
THE RED DOUGLAS

SIEGFRIED
ORLOFF
TIFFANY
JASMANIA
WABASH



ORLOFF



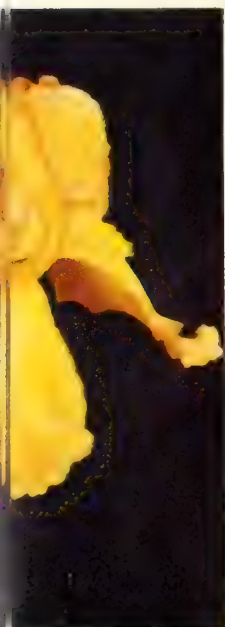
SALE Offer C ANY 10 for \$40
(only 1 of a kind)
varieties listed directly below

E. B. WILLIAMSON
CORONET
ETHIOP QUEEN
NOONTIDE
ORMOHR
SABLE

BERMUDA SAND
LOUVOIS
STAINED GLASS
TOKEN
MOUNTAIN SNOW



SALE Offer D All 26 of the above in
lots B and C for **\$55**



MIDWEST GEM



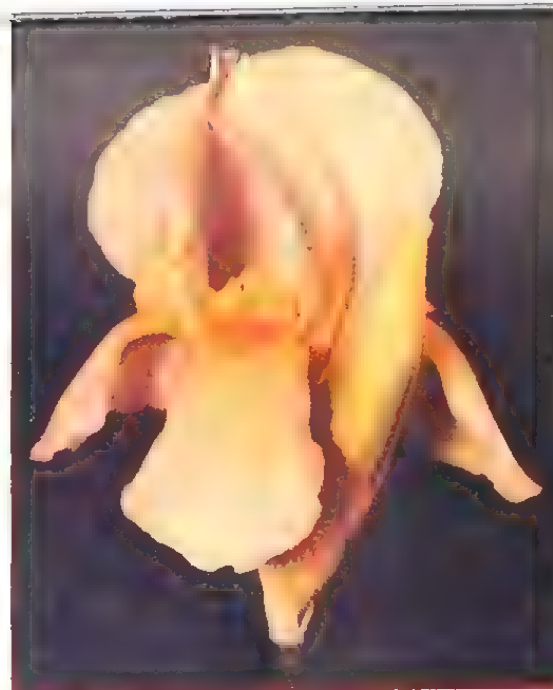
NARANJA



AMIGO



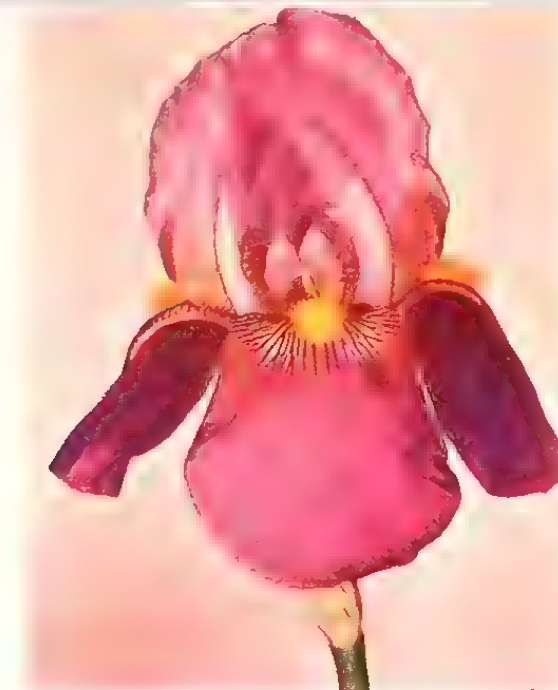
LIGHTHOUSE



GOLDEN TREASURE



SIEGFRIED



MISS CALIFORNIA



THE RED DOUGLAS



MOROCCO ROSE



RADIANT

Opportunity in startling, almost unbelievable reality

☆ ☆ ☆

SALE Offer A Any 10 for \$5
Any 20 for \$10

(only 1 of a kind varieties listed directly below)

- AMIGO
- AMITOLA
- ANITRA
- AT DAWNING
- BEOWULF
- CALCUTTA
- COPPER LUSTRE
- DESTINY
- ELKHART
- FAR WEST
- GOLDEN HIND
- ITASCA
- TREASURE ISLAND
- KALINGA
- MOHRSON
- LIGHTHOUSE
- MARCO POLO
- RED CROSS
- NARAIN
- SOLITUDE
- ROSY WINGS
- REBELLION
- SEADEEP
- SANDALWOOD
- SNOWKING
- NARANJA
- SIR LAUNCELOT
- MARQUITA

WHERE is there an iris lover who, all of his or her iris growing career, has not yearned for the day to come when these things might be feverishly unpacked and carefully planted out in the soil of their very own garden? Rarity and high price may have kept them at forbidding distance, but at last here they are, yours to have and to own and to enjoy, in group offers which permit wide selection

The very aristocracy of Irisdom will be found here. Only last season a hundred dollars would scarcely have dented the list. If you want the best iris collection that money can buy, do not delay . . . shortages of some sorts are bound to come as the days pass. Place your order as soon as possible—we will ship it on the date you desire after June 20th

SALE Offer B Any 10 for \$20
(only 1 of a kind)
varieties listed to the right

- APRICOT
- CHINA MAID
- MISS CALIFORNIA
- MIDWEST GEM
- MODISTE
- MOROCCO ROSE
- GOLDEN TREASURE
- MRS. WILLARD JACQUES
- RADIANT
- THE RED DOUGLAS
- SIEGFRIED
- ORLOFF
- TIFFANY
- JASMANIA
- WABASH



ORLOFF

☆ ☆ ☆

SALE Offer C ANY 10 for \$40
(only 1 of a kind)
varieties listed directly below

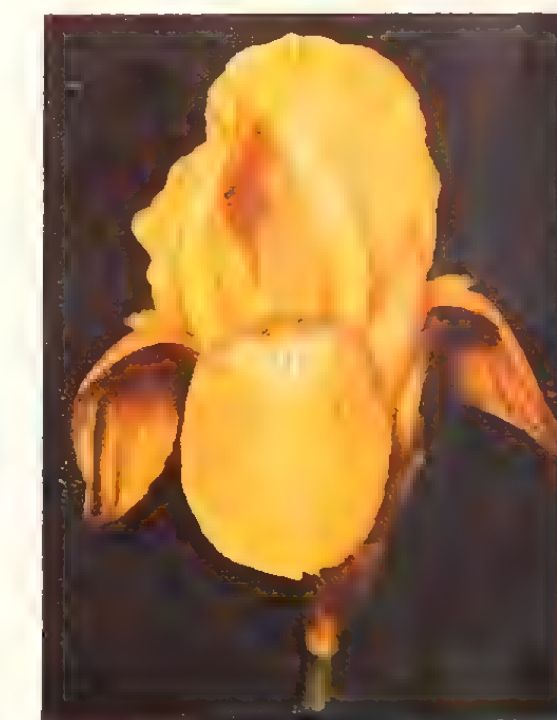
- E. B. WILLIAMSON
- CORONET
- ETHIOP QUEEN
- NOONTIDE
- ORMOHR
- SABLE
- BERMUDA SAND
- LOUVOIS
- STAINED GLASS
- TOKEN
- MOUNTAIN SNOW

☆ ☆ ☆

SALE Offer D All 26 of the above in
lots B and C for \$55



MIDWEST GEM



NARANJA



GLORIOLE

Your Choice of Any 12 for \$3⁰⁰

*All full size, labeled and
postpaid, of course*



ALINE
 AMENTI
 CHEERIO
 BURNING BRONZE
 GUDRUN
 BLACK DOUGLAS
 SHINING WATERS
 JOYCETTE
 LADY PARAMOUNT
 MELDORIC
 ROBERT
 AUTUMN FROST
 SPOKAN
 CORALIE
 GLORIOLE
 TARANTELLA
 JEB STUART
 DESERET

or any of those on page 11.

GARDEN CLUBS! *Show your members the colored iris movie*

You can now arrange to show your members the improved and lengthier iris movie, "IRIS TIME," during your 1940 and '41 season. Clubs from New England to the deep South, the great Southwest, the mid-West, and California, have enjoyed this colorful show during the season just ended. Favorable comment has been coming to us constantly during its itinerary.

A new reel has been added while the iris were in flower this spring, making a total of three reels for the program, and a running time of about 45 minutes. The film is all in natural color Kodachrome, 16mm in size. Clubs must obviously furnish their own projector and screen.

This is not an advertising film in the usual sense, and it contains no actual advertising. The scenes were taken in our gardens and fields during the blooming season, and also in

those of Dr. Kleinsorge, the hybridizer. They show iris in mass in beautifully landscaped surroundings, individual specimens of a host of the newest novelties, close up and in detail, and many unintroducted new seedlings.

There are scenes taken in the fields at digging time, showing the harvesting of rhizomes for shipment, and the proper method of division and transplanting.

"IRIS TIME" is a colorful and very entertaining program, and permits those who do not have an opportunity to see a collection of modern iris to enjoy a life-like view of the very best at close range.

The rental fee is \$5.00, payable in advance. Due to close proximity of bookings and the necessity of air-express in some instances to make connections, we suggest that you arrange for reservations as far in advance as possible. Any further details or information may be had by writing us.



FAR WEST



COPPER LUSTRE

MARCO POLO Each \$1.00

A beautiful and striking red iris bred by Robert Schreiner in St. Paul. The standards are bright rose, the falls vivid crimson. Beard is orange yellow and there is no veining at the haft. A lighter and brighter red than Cheerio.

MARGARET ROWE Each \$1.50

A deep old rose self, set off by a brilliant gold beard and haft. One of the many fine things from Dr. Ayres, of Cincinnati.

MARQUITA Each 50c

A well named iris in brilliant ivory yellow, with ochraceous maroon veinings on the falls. Standards are ivory deepening to sulphur at the base. Falls are the same color, but are entirely lined maroon. Always a sellout.

MARY GEDDES Each 25c

A garden effect of salmon-orange, actually an ochraceous salmon with deeper stained falls. A former Dykes medal winner and one of the most popular irises of all time.

MATULA Each \$10.00

A beautiful blend of brilliant rose, rich orange, crimson and buff. This is one of the latest sensations from those wizards, the Sass Brothers. The flower is very large, with long falls that are waved and crimped, as are those of Midwest Gem. This makes a mighty handsome pair.

MAYA Each \$2.00

Strawberry or rose-red self, with velvety falls blended with copper at the haft. A distinct and different iris of large size and on fine stems.

MAY DAY Each \$17.50

Declared to be the finest apricot-salmon thus far originated. Self colored in standards and falls, it has a suffusion of burnished copper and a very bright orange beard. A large bloom on husky stalks. Very few plants.

MATTERHORN Each \$10.00

The most beautiful and cleanest white we have ever seen. It does not displace Snowking, for they are entirely different in type, the latter big, bold, and imposing, while Matterhorn is delicate despite its large size—ladylike, one might say. Pure white, even the beard is cream. Very well branched, 40 inches tall.

MELDORIC Each 35c

Huge blue-black self, one of the richest and most striking irises ever introduced. Neither a rapid increaser nor a free flowerer, it rewards the owner with spikes of bloom that are well worth waiting for.

MIDWEST GEM Each \$3.00

One of the very best new Sass varieties, a beautiful self of pale apricot yellow, lightly flushed pink. Immense in both stalk and flower, it particularly attracts those who first see it because of the odd crimped petals. The colored picture on page 12 is a reasonably good likeness, but fails to portray the elusive pinkish tinge.

- MING YELLOW** Each \$8.00
A yellow without a fault—clear, rich, smooth without venation, big and slightly waved. Habit of growth similar to Depute Nomblot. Mrs. Pattison considers it the most sensational iris she has ever grown, and so states in her catalog.
- MISS CALIFORNIA** Each \$2.00
Gigantic lilac pink, with the growing habits of Dauntless, one of the parents. While not the "pinkest" iris, the shade of this one is quite novel and it surely has every attribute that one could wish for in a perfect flower. One of the high-lights from Carl Salbach. See page 13.
- MISSOURI** Each 75c
A famous clear blue that won the Dykes medal in 1937. The color is particularly fine when afforded light shade from the afternoon sun. Stock still limited.
- MME. M. LASSAILLY** Each \$3.00
A new one from France bearing some resemblance to the variety Amigo, with a more pronounced contrast of blue standards and blackish purple falls edged blue. It won the Dykes medal in 1935. Larger than Amigo, with velvety falls, slightly waved.
- MME. LOUIS AUREAU** Each \$2.00
This heavily dotted and sanded plicata from Cayeux is a rival of the series now so popular from the Sasses. It has a ground color of silvery white, closely netted with rosy heliotrope. A very large blossom.
- MODISTE** Each \$4.00
A beautiful self of pale mauve, much different from other pale blues and lavenders now available. In color it is similar to the old and lovely "Mlle. Schwartz," but MODISTE is a flower of broad hafts, full rounded shape, and ideal growing habits. Stems are heavy, well branched, and around 40 inches tall. Shown in color on page 6.
- MOHRSON** Each 75c
A deep violet colored seedling of Wm. Mohr, with darker veins and a rich bronzy gold beard. Here is a spectacular flower, one of the very largest, ruffled and crinkled. The picture on page 9 is an excellent likeness.
- MONADNOCK** Each \$3.00
Tall and stately, a bright rose-red self, with flaring falls and smooth finish. A seedling of Marquita, quite late, over 40 inches in height.
- MOROCCO ROSE** Each \$3.00
Very large rose-pink self, with soft yellow glow at the heart and brownish cast about the haft. We believe it to be the nearest to genuine pink of any iris in this catalog. Unlike most iris of this color, Morocco Rose is a really big flower. See page 12.
- MOUNTAIN SNOW** Each \$4.00
A cool white, as the name implies, with a very faint suggestion of blue shadow on the falls. A New England introduction, with size and height to satisfy any critic, and with very broad falls and thick substance.
- MOUNTAIN SUNSET** Each 50c
An indescribable medley of fawn and old gold equally suffused in the standards, and the falls entirely overlaid with varying shades of violet. Novel in shape as well as in color; a blend of pastel tints that invites close inspection. Very late, medium in size, 30 inches tall.
- MRS. SILAS WATERS** Each \$1.50
Huge primrose yellow self, standards and falls practically the same shade, cream haft. Three feet and over in height.
- MRS. WILLARD JACQUES** Each \$1.50
This is a more deeply colored flower than Noweta, which it resembles in type. It has, however, an overtone of buffy apricot, setting it apart from other pinks. Also, it is a very large flower, with rather long falls and pronounced crinkling.
- NARAIN** Each 50c
A silky intense indigo blue, with blue beard on a cream throat but without veinings. Rather early, with immense foliage and very large flowers. One of the best blues at any price.
- NARANJA** Each 90c
The first iris of huge size with a definite orange tone. Falls are ochraceous orange, with a yellow heart, and the standards are bright empire yellow, the beard orange yellow. It gives a pronounced orange effect in the garden. See page 13.
- NEON** Each 40c
Bronzy gold standards, falls bright and velvety carmine red, rich and glowing. The beard is a fiery golden orange. When well grown this is a magnificent iris.
- NOONTIDE** Each \$5.00
Referred to by Mr. Thole, the introducer, as his "yellow Depute Nomblot." A very tall and large flowered solid yellow, with an odd overlay of old gold. This is not a dirty yellow, as one might be led to suspect, but a handsome and unusual iris in a much crowded field. A fine grower, it will not disappoint you.
- NOWETA** Each 25c
So great is the demand for this ruffled and free blooming creamy pink, that we acquired additional stock after we ran short last year, in order to propagate a supply again for this season. Unbeatable as a garden subject or for cutting.
- OLD PARCHMENT** Each \$10.00
A light creamy tan, with golden buff overlay, a most unusual color break and a distinctly beautiful new iris. Standards are domed and closed, falls flaring and rather tailored in appearance. A perfectly huge bloom, heavy of substance, and the longest lasting variety in our garden. A Kleinsorge introduction of 1939 that we consider the most outstanding recent iris next to Prairie Sunset. In color on the cover.
- ORLOFF** Each \$3.00
New plicata of good size and most unusual coloring, being a sort of cinnamon brown in effect. The ground color is deep cream, heavily dotted and etched red-brown, with considerable gold near the center. Throws several spikes per rhizome, but increases rapidly even so. Shown on page 13.
- ORMOHR** Each \$8.00
Shown on the back cover. One of the largest irises in existence, and especially noteworthy because it is a seedling of Wm. Mohr. It reaches 40 inches in height, with several great blooms on well-branched stems. Perfectly hardy, and a producer of seed and a new race of seedlings. The color is pale lilac with a silvery cast, veined violet.
- OZONE** Each \$1.50
A peculiar and subtle shade of rosy lavender, the same in standards and falls, with a pronounced copper area throughout the center. Large and of ideal shape, a fine grower. Very few plants.
- PALE MOONLIGHT** Each 40c
Here is a lighter blue than either Sierra Blue or Shining Waters, but with the same rampant growth and lordly blossoms. Very tall, a uniform pale blue with yellow beard.



WABASH

PATRICIA **Each \$8.00**

A very clean and sparkling white, semi-flaring in form, with both standards and falls frilled and fluted at the edges. Not a giant in size but very lovely and a welcome addition where size has been an over-emphasized feature.

PLURABELLE **Each 60c**

Standards of gold suffused apricot, falls lilac-rose with glowing hafts. Tall stems, medium size flowers. A very effective garden iris. Late.

PRAIRIE SUNSET **Each \$30.00**

All that has been said about this gorgeous Sass creation is true, but it simply has to be seen to be realized. The blendings of peach, apricot, rose, copper and gold are so well done that one is at a loss to describe it in a manner that might be conceived in the mind of the listener. A fine big flower, and the color will absolutely stun you when first you see it, and every time you see it!

RADIANT **Each \$3.00**

Standards of burnished golden bronze, falls of glowing copper red, one of the most strikingly brilliant iris obtainable. Of better than average size, well branched, and like Orloff it almost blooms itself to death, but strangely enough it increases plentifully and goes ahead to bloom again in the fall occasionally. Shown on page 12.

REBELLION **Each \$2.00**

Smooth and velvety deep blood red, almost a duplicate of Burning Bronze, except that the coloring is far more vivid. Many richly colored iris spot in heavy rain, but not this one.

RED CROSS **Each \$1.00**

A rather bizarre contrast of bright rose-red and white. It is almost an exact counterpart of Mary Geddes in markings and type, but instead of an orange or salmon cast this one appears as rose red.

RED GLEAM **Each \$20.00**

Here is the red iris that actually looks red, and has been declared the nearest approach to scarlet thus far obtained in this flower. It is of good size, of beautiful semi-flaring form, three feet in height, and a free bloomer. Texture is velvety but excitingly brilliant. Limited stock. A Lapham introduction in 1939.

ROBERT **Each 40c**

A chamois colored self, or, perhaps a yellow-tan would better describe it. Near the haft there is a light suggestion of pale blue. Of perfect shape and smooth substance. Height 3 feet.

ROSARIO **Each \$2.00**

Beautiful ochraceous yellow, flushed and overlaid, old rose. Might be called tourmaline pink with gold suffusions extending from heart of flower into the falls. Deep yellow beard. Form is broadly flaring, very large in size, finely branched and 40 inches tall. A Thole origination of 1939.

ROSELAND **Each \$8.00**

Another top-notch from David Hall, with buffy-rose standards and rich berry red falls edged lighter—a splendid garden effect of bright rose-pink. A giant in size, with 8-inch blossoms, 38-inch stalks. Very late, in the Chicago area it lasts until late June.

ROSY WINGS **Each \$1.00**

Winner of the Dykes medal 1939. A blend of rose and copper, with excellent form, flaring falls, large size, 40-inch stems. A profuse bloomer and easy grower. To grow this iris at maximum quality, remove some of the excess bloom stalks, as in the case of Itasca. Do it early, and the result will surprise you.

ROYAL COACH **Each \$5.00**

More yellow than any of the others in this new series of Sass plicatas, with definite brown stitching. Observers opine that this is really a "yellow" plicata. Well formed rounded flowers, on 3-foot stems.

RUTH POLLOCK **Each \$20.00**

The Sass Brothers have produced an interesting line of these yellow ground plicatas during the past three seasons, and here, in their own estimation, is the crowning achievement. The flower is near perfection in all details, a soft smooth tone of light yellow, beautifully marked with reddish stitching. Few rhizomes.

SABLE **Each \$10.00**

Almost black, a uniform shade of deepest blue-black-violet, with blue beard. Sable has every attribute that a fine iris should possess—large size, tall stalks, thick substance and a wonderfully lustrous sheen. First Class Certificate in the Rome, Italy, trials. This iris will really go places.

SANDALWOOD **Each \$1.00**

A new fawn-brown blend, showing quite a resemblance to our own introduction, Far West. It carries more mauve tones, is a trifle lighter in general effect, slightly ruffled.

SANDIA **Each 50c**

Bright deep pink blend, unusual with a smokey veil. There is considerable yellow in the central portion of the broad falls. A very large and strong growing iris, beautiful in the garden and excellent for exhibition.

SATSUMA **Each \$3.00**

Very broad spreading flower of pale brown-pink, faintly shadowed cobalt violet giving a warm tan effect in sunlight. Yellow beard, slightly fragrant, vigorous grower, 40 inches tall. A recent introduction from F. A. Thole.

SEADEEP**Each \$1.00**

This is the finest blue bicolor in our catalog. A cross of Buto with Santa Barbara, it combines the deep rich color of the former in the falls with the clean blue of the latter in the standards. It is tall and well branched, blooms prolifically, and the slightly frilled flowers are produced in profusion.

SHAH JEHAN**Each 25c**

Standards are creamy buff faintly edged lavender, the falls very rich velvety chestnut merging into purple, thence gradually fading out to a margin that repeats the color in the standards. Beard is rich orange. An oriental blend.

SETTING SUN**Each \$4.00**

A very deep but fiery red copper, almost blackish in certain lights, a ball of fire in others. The standards are rose-copper, with yellow at the base. A recent thing from the late Dr. Kirkland, originator of Copper Lustre.

SIR KNIGHT**Each 40c**

Rich purple bicolor, with more clear purple and less bronze than Destiny. Gigantic in size, with petals like plush, it ranks as one of the best of dark irises.

SHINING WATERS**Each 30c**

Clear and clean blue, like the reflection of an azure sky in crystal waters. The wax-like texture of the petals has a striking contrast in the orange beards. Height 4 feet, large, flaring falls, but a little tender.

SIEGFRIED**Each \$4.00**

An iris they are all talking about, and one which every grower will want to own, once the price is within reach. A flower of really huge size, pale sulphur yellow, overlaid with a stippling and dotting of purple. A slightly buffy overtone blends the colors together. Shown in natural color on page 13.

SIERRA BLUE**Each 40c**

A soft, clear, enamel-like blue. It is of tall and stately habit, sometimes reaching over 5 feet, with many buds to the stalk. In 1935 it won the Dykes medal, and is a consistent flower show winner. See page 11.

SIR LAUNCELOT**Each 50c**

Gleaming chestnut red, with bright golden brown standards. It is lighter than Spokane, with more orange in it, and with brighter red falls. Of good size and medium height.

SMOLDER**Each \$3.00**

Deep blackish purple, with red underglow, self color. Beard brown, giving the flower a very deep and especially rich appearance. Fragrant, well branched, and of large size.

SNOW MAIDEN**Each 25c**

A pure white of very low growth, 10 inches, clean and lovely, producing an almost unbelievable quantity of bloom. Like a drift of newly fallen snow. Blooms with the tulips.

SNOWKING**Each 90c**

Regal in bearing, with broadly flaring great white blossoms, lit with gold at the throat. Heavy of substance, bold and strong in growing habit, 3 feet tall. A wonderful and thoroughly hardy white from the Sasses.

SOLITUDE**Each 50c**

Nothing gay or flashy about this flower, but for those who can appreciate subtle beauty in a sombre iris we are certain this one will be most welcome. A self of blackish mulberry, with beard in harmony.

**ITASCA****SOUV. DE F. DENIS****Each \$2.00**

Cayeux's entry for the blackest iris. It is indeed dark, with squarely held falls and a deep bronzy beard. Neither large nor tall, but very dark.

SPOKAN**Each 40c**

A solidly colored deep chestnut red, of great size—one of the very largest—with an odd coppery suffusion throughout. The standards are of a brownish tone, and the center is highly lighted with gold. At this price you should not defer having it in your collection.

SPRING IDYL**Each \$5.00**

Milk white shading into orchid pink, the pink very pronounced at the top of the standards and the bottom of the falls. Beard lemon. The stems are tall and wiry, the blossoms amply spaced. This iris is a very delicate affair, giving a sort of apple blossom effect in the garden. It provides a remarkably pink note, a truly lovely new thing from E. G. Lapham, of Elkhart, Indiana.

STAINED GLASS**Each \$8.00**

A copper-red self, one of the most brilliant iris we have ever seen when viewed with the sun behind it. In such a light it resembles nothing quite so much as stained glass . . . rich, glowing, almost aflame! Make no mistake, this is not a red iris, but a solid copper of a reddish tone, the same all over except for the bronze yellow beard. From Dr. Wilhelm, of Chicago, for whom we introduced it last season. See page 5

SWEET ALIBI**Each 75c**

Deep cream with an inward glow of green, a very large flower and vigorous grower. From California, it has proven reliable in the mid-West and East.



TIFFANY



TOKEN



GOLDEN LIGHT

TARANTELLA Each 40c
A pink stitched plicata, taller and larger than older varieties of this type. Ground color is snow white, neatly marked with pinkish lines about the edges of both falls and standards. Slightly ruffled.

TENAYA Each 25c
An extremely dark and glowing uniform red-purple, with brownish undertone. Gives a color effect somewhat like Wotan, but the flower is rounded in shape and without haft venation. The richness is emphasized by the brown-gold beard.

THE BLACK DOUGLAS Each 35c
Large blackish purple of even tone, different in its "black" effect as compared to Black Wings in that it is on the red-purple side instead of being blue-purple, as in the case of the latter. Medium height, fine form, and very velvety surface.

THE RED DOUGLAS Each \$4.00
Possibly more glamour was attached to the introduction of this variety than any iris in recent years. Simply colossal in size, as smooth and heavy as a piece of richest plush. It is deep rosy-wine-red, solid at the haft, with a brownish cast near the center, beard rich orange. It is not the reddest iris by any means, but the coloring is gorgeously rich and deep, and most critics agree that it ranks as one of the ten best iris in commerce. Shown on page 13.

TIFFANY Each \$4.00
The third member of that great Sass plicata trio, the others being Orloff and Siegfried. It is soft yellow in color, with stitchings of bronzy-pinkish-violet, if you can imagine such a combination. Less formal in appearance than Siegfried, and gives a yellow rather than a creamy-tan garden effect. Very large, ruffled, vigorous growing, and reasonably tall. Shown in natural color on page 20.

TOKEN Each \$5.00
Many qualified critics have seen this new iris and the usual pronouncement is "a glorified Mary Geddes." Carrying much of the same salmony-orange-brown blended effect, Token is a far finer individual flower—larger, of better form, and with smoothly colored falls. Standards are old gold flushed rose, falls rosy brown-red, with very little haft venation. It does not fade and is a husky grower, 38 inches tall, with blooms having a 7-inch spread. A 1939 introduction from David Hall, of Chicago, shown on page 20.

TREASURE ISLAND Each \$2.00
A truly gigantic flower of bright, clear, rich yellow. Tall stems, not a trace of Dykes blood in its parentage, hardiness beyond question. This fine iris never shows a trace of purple flecking, a fault which often crops out in many otherwise excellent yellows, nor is it marred by an olive cast, another shortcoming of a few others. The colored plate on page 10 is an accurate reproduction.

ULTRA Each 25c
Largest iris in the early blooming dwarf group, and one of the bluest of all varieties. It is most striking when planted with yellow and white dwarf irises, or with yellow primroses. A fall bloomer, besides, and it increases rapidly.

VENUS DE MILO Each 25c
Pure white, of a warm creamy tone, with no haft markings and a bright yellow beard. The most popular white iris in commerce; a splendid grower and free bloomer, it well deserves the honor of runner-up for the Dykes Medal in 1936. Three feet tall, well branched.

VICTORY Each \$5.00
A striking violet-purple of great size and excellent form on 44-inch very strong stems. A richly colored self, with inconspicuous blue beard. Standards are domed and the widely flaring falls are devoid of haft markings. David Hall, the originator, says this iris is especially admired by men.

VISION Each 40c
A large variegata with bright yellow standards and rich red-brown falls, margined yellow. When well grown this can be remarkably striking. It seldom does its best the first season.

WABASH Each \$2.00
A new iris so far in advance of others of similar coloring that they are simply not in the race. With clean white standards and bright purple falls, it might have been called "Elk's Temple," so well does it call to mind the colors of that well-known fraternal organization. The flowers are large and are borne on well branched stalks almost forty inches in height. Picture on page 18.

WASATCH Each 50c
The largest plicata and one of the largest of all irises. Of the San Francisco type, with huge standards and very broad falls, blue stitching at the edges.

WAVERLY Each \$3.00
A 40-inch clear light blue, highly commended by all judges who have seen it. It is very early in the tall bearded class, clean in color, with widely flaring falls and nice branching.

WM. MOHR Each 25c
The entire bloom is a self of pale lilac, closely netted and veined deep violet, producing a weird, yet very lovely effect. A monster flower, of medium height, with small foliage. Does better if divided and transplanted at least every other year.

WAR EAGLE Each 25c
One of the largest irises ever produced, it will often carry away honors for the biggest bloom in the show. Deep mulberry red, with prominent haft markings and yellow beard.

REMEMBER . . . 3 for the price of 2 if the variety is listed at not over \$1.00 each. Three of the same kind, not three different sorts. * * *

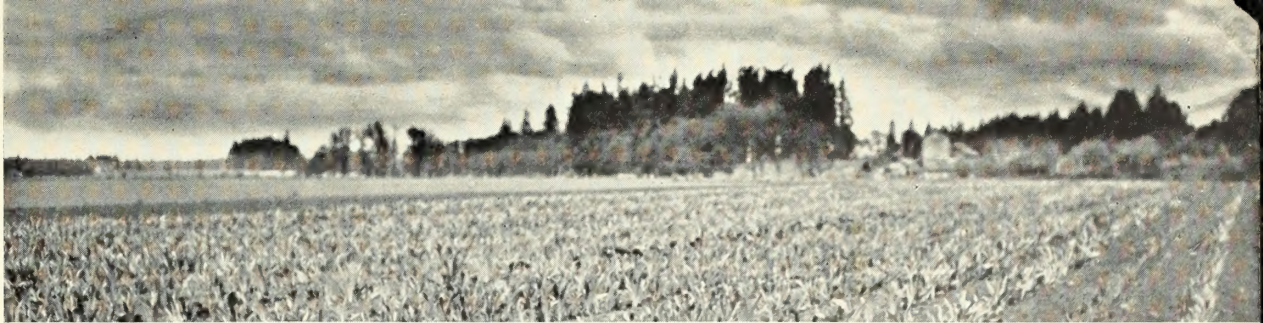
OVER THE HILLS and FAR AWAY

So stretch the long rows of iris plants, green with the vigor of healthy growth that comes with clean cultivation, mellow sandy loam, and annual dividing and resetting in a new location.

They do not know the soft caress of semi-tropic climate, the magic of trick fertilization, nor the fatness produced through irrigation.

They are tempered by freezing in the winter time and are cured by rainless summers.

Rhizomes so grown provide the greatest assurance of bloom the first season, a liberal increase in your own garden, and freedom from diseases and pests.



Do you have the booklet . . . "LET'S TALK ABOUT IRIS"?

It's free! 24 pages, tells everything you want to know about this absorbing subject . . . culture, diseases and pests, how to grow seedlings, all about the American Iris Society . . . Please enclose a three cent stamp for mailing.



ORMOHR

Awarded an Honorable Mention by American Iris Society in 1939. A completely new race of seedlings from this hybrid is now blooming in the garden of the originator, Dr. R. E. Kleinsorge.

COOLEY'S GARDENS, SILVERTON, OREGON